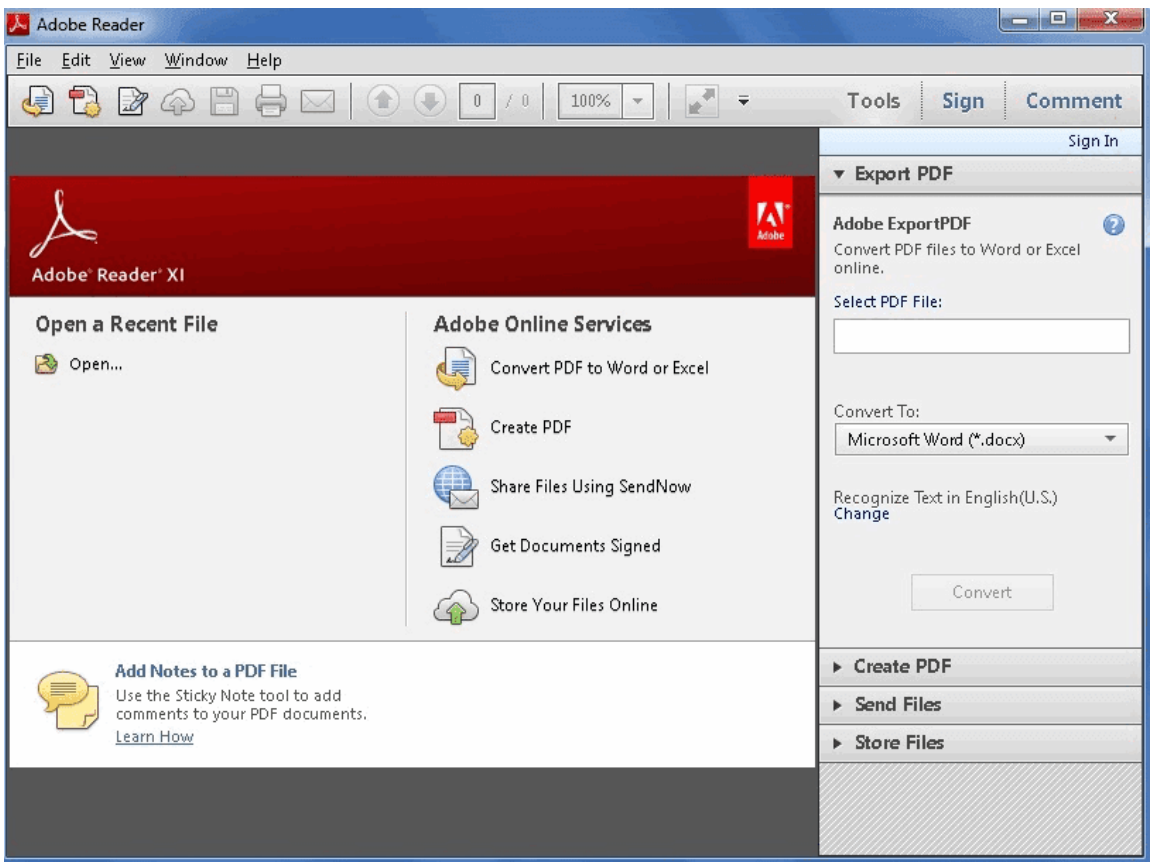


MICROSOFT OFFICE 2010 WINDOWS ACTIVATOR [thethingy] Crack



DOWNLOAD: <https://h4t4y.com/2ikwco>



the full version of the RAR file (993.10MiB). (Note: The RAR file can be extracted using 7zip.) Please read the following instructions before performing any steps in this tutorial. All the steps in this tutorial are highly recommended to be performed in a clean installation of Ubuntu with no third party applications installed. This tutorial is intended to be a general guide to help you set up a user account on the domain that will be used as a workstation in a network. These instructions apply to Microsoft Windows XP, 2003, 2008, Vista, 7, and 8. You must be connected to the domain for a successful configuration. Please note that the instructions in this tutorial may require some modifications and/or additional steps if the following requirements are not satisfied: 1. Internet Explorer is installed in your browser. Internet Explorer 11 does not support Client Side SSL. The connection to a secure site, such as Microsoft Office Outlook, will not work. If you're unable to connect to a secure site, please contact your network administrator to enable the necessary network configuration for accessing the secure site. 6. If you're using a VPN, make sure that the VPN client configuration is correct. Click here for instructions on how to enable your VPN client on Ubuntu. - Login to the domain where you want to create a user account using an administrative account (such as an account with system administrator rights). If you're unable to login to the domain, contact your network administrator. 2. On the Windows XP or Windows Server 2003 computer, open a new Microsoft Office Excel worksheet by double-clicking on it. Click on the File tab. 3. Click on the Options button. 4. Under the Miscellaneous section, click on the View tab. 5. Click on the Security Settings button. 6. Under the Encryption section, uncheck the Encrypt passwords in files check box. This is the default security setting for Microsoft Office Excel and will encrypt passwords in files. Note: If you're using Microsoft Office 2010, the Encrypt passwords in files option is located on the General tab in the Security Settings section of the Options dialog box. 7. Click OK. This enables encryption for Microsoft Office Excel files. However, the passwords of any files that you open in Microsoft Office Excel are not encrypted. Click here for detailed instructions on how to enable encryption for Microsoft Office Excel files. 7. Click on the File tab. 8. Click on the Options button 82157476af

Related links:

- [Serial Para Activar Office Professional Plus 2010 cristian pasar posesi](#)
- [Wifisky.1000mw.Driver.Download](#)
- [Raftaar Swag Mera Desi Mp3 Free Download](#)